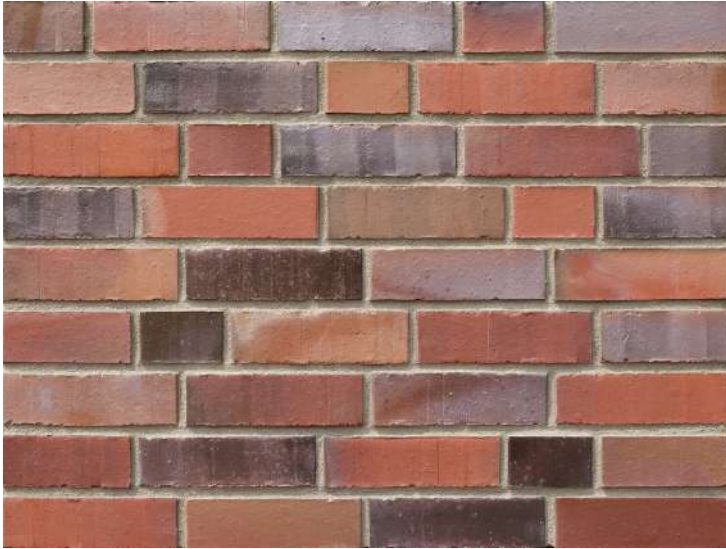


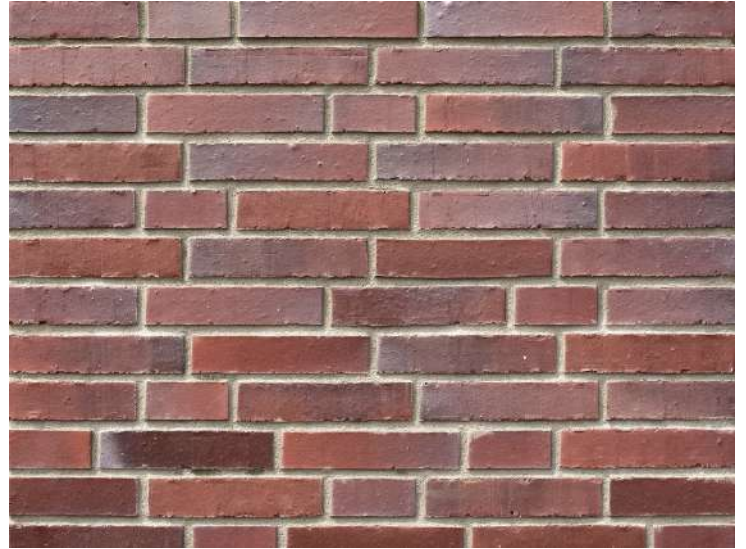


***Wittmunder
Klinker***





Sortierung 6



Sortierung 9



Sortierung 16



Sortierung 132



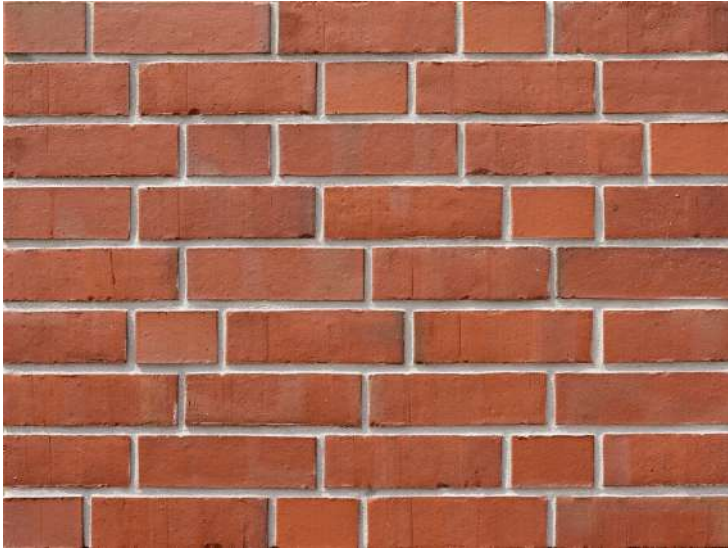
Sortierung 11



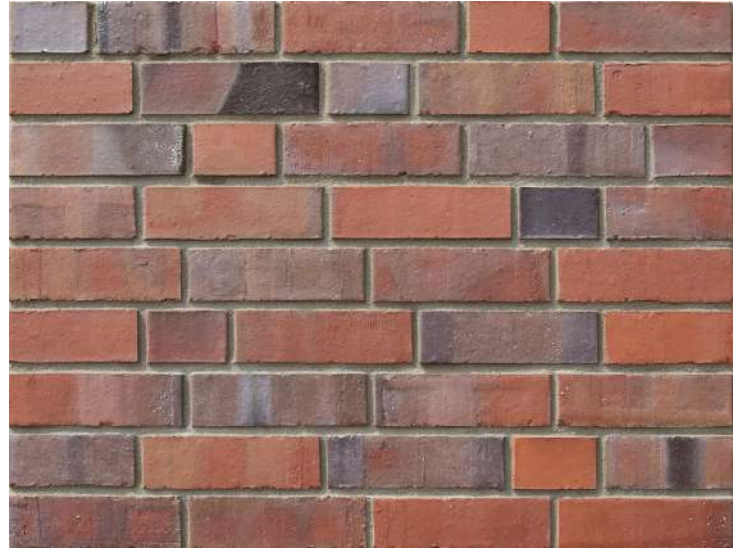
Sortierung 139



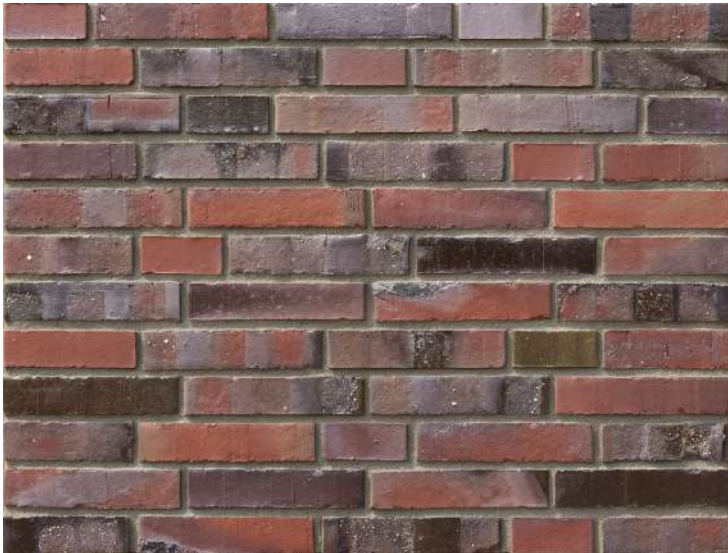
Sortierung 198



Sortierung 18



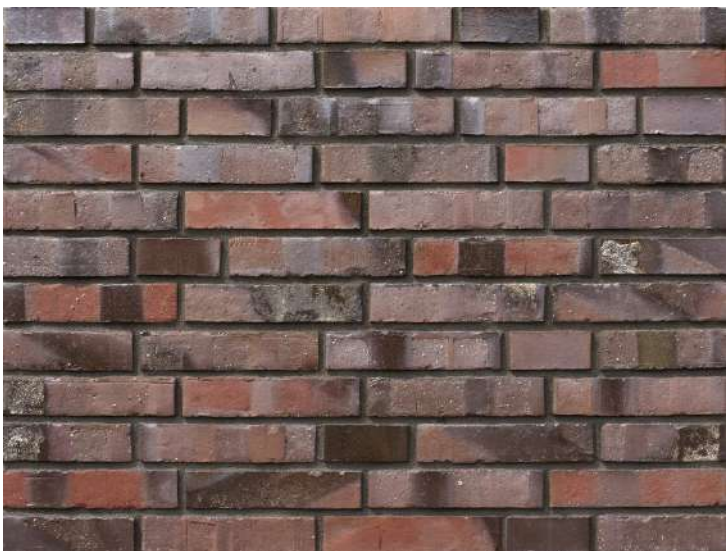
Sortierung 151



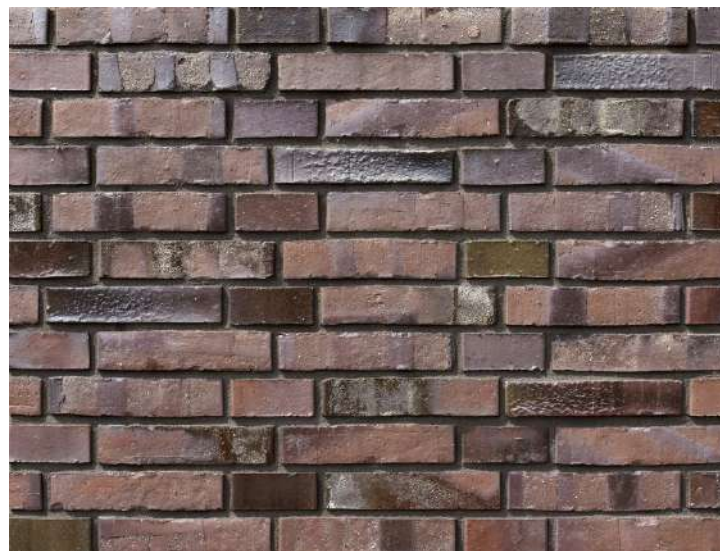
Sortierung 219



Sortierung 207



Sortierung 26



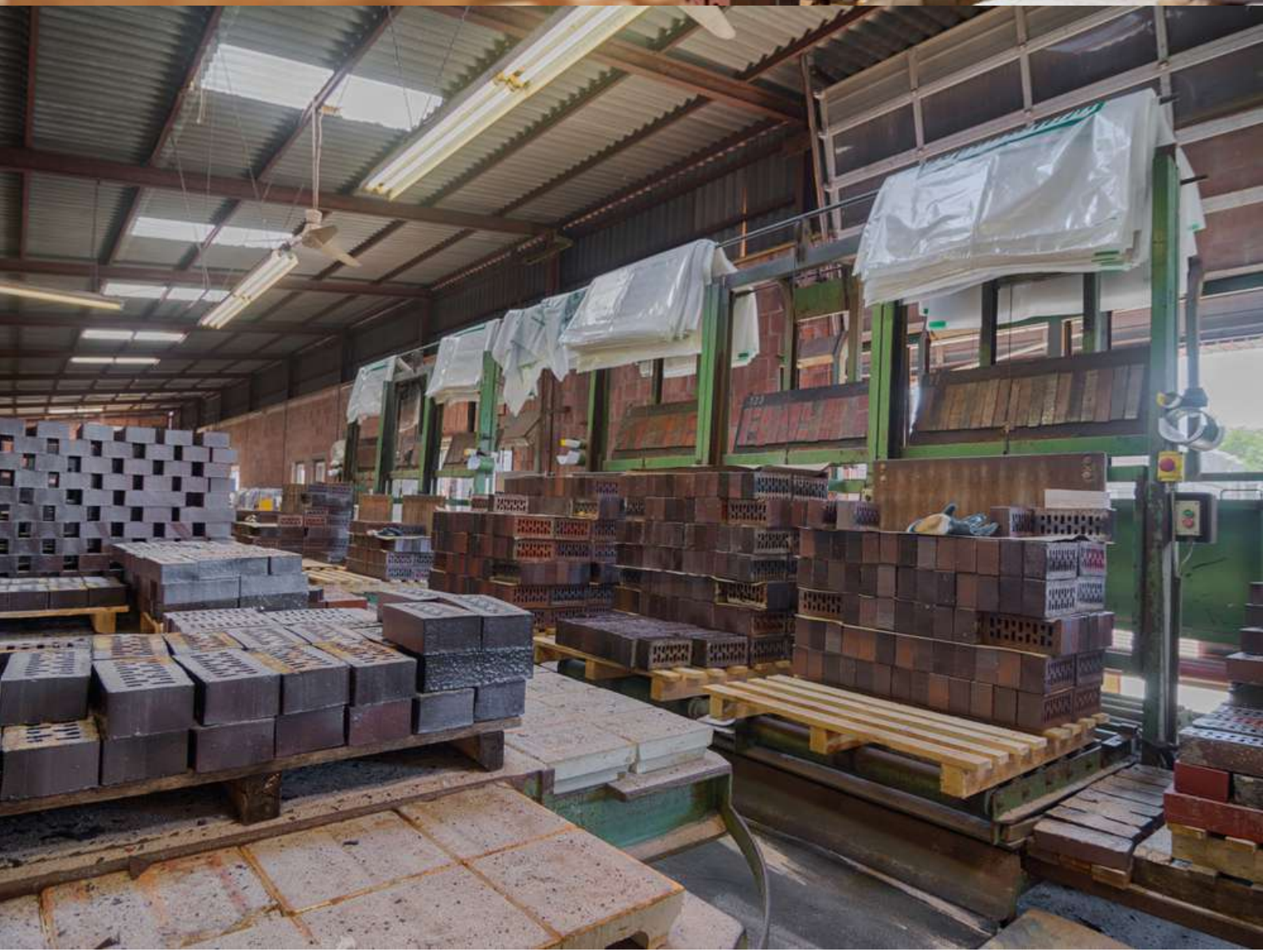
Sortierung 2



Sortierung 62



Sortierung 101





Sortierung 27



Sortierung 191D



Sortierung 72



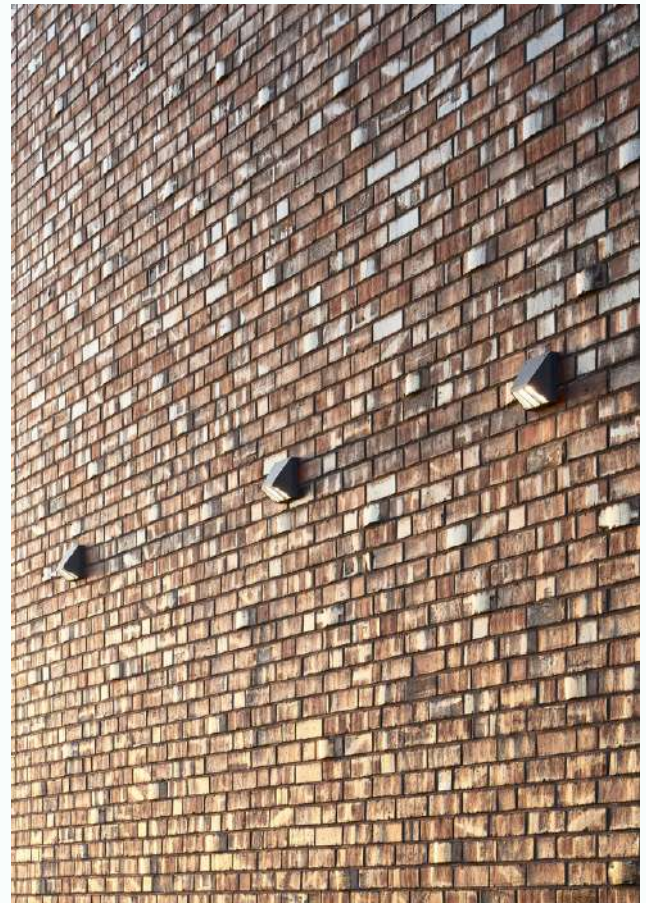
Sortierung 198







Sortierung 191D















Verwaltungsgebäude am Altmarkt, Oberhausen
Kuehn Malvezzi Architekten, Berlin



Fotos: Hiepler Brunier, Berlin

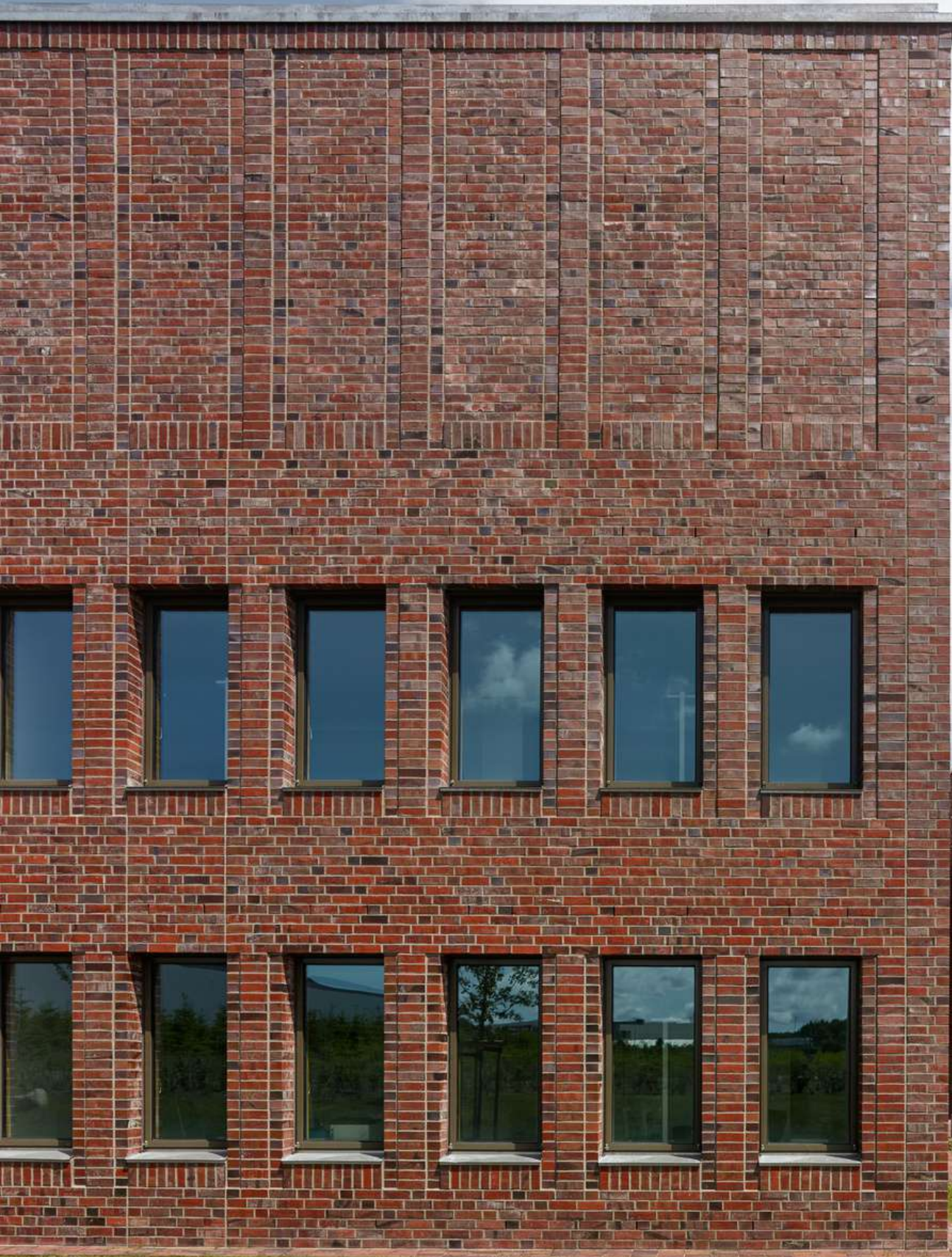
Sortierung 139 mit Scheinfuge

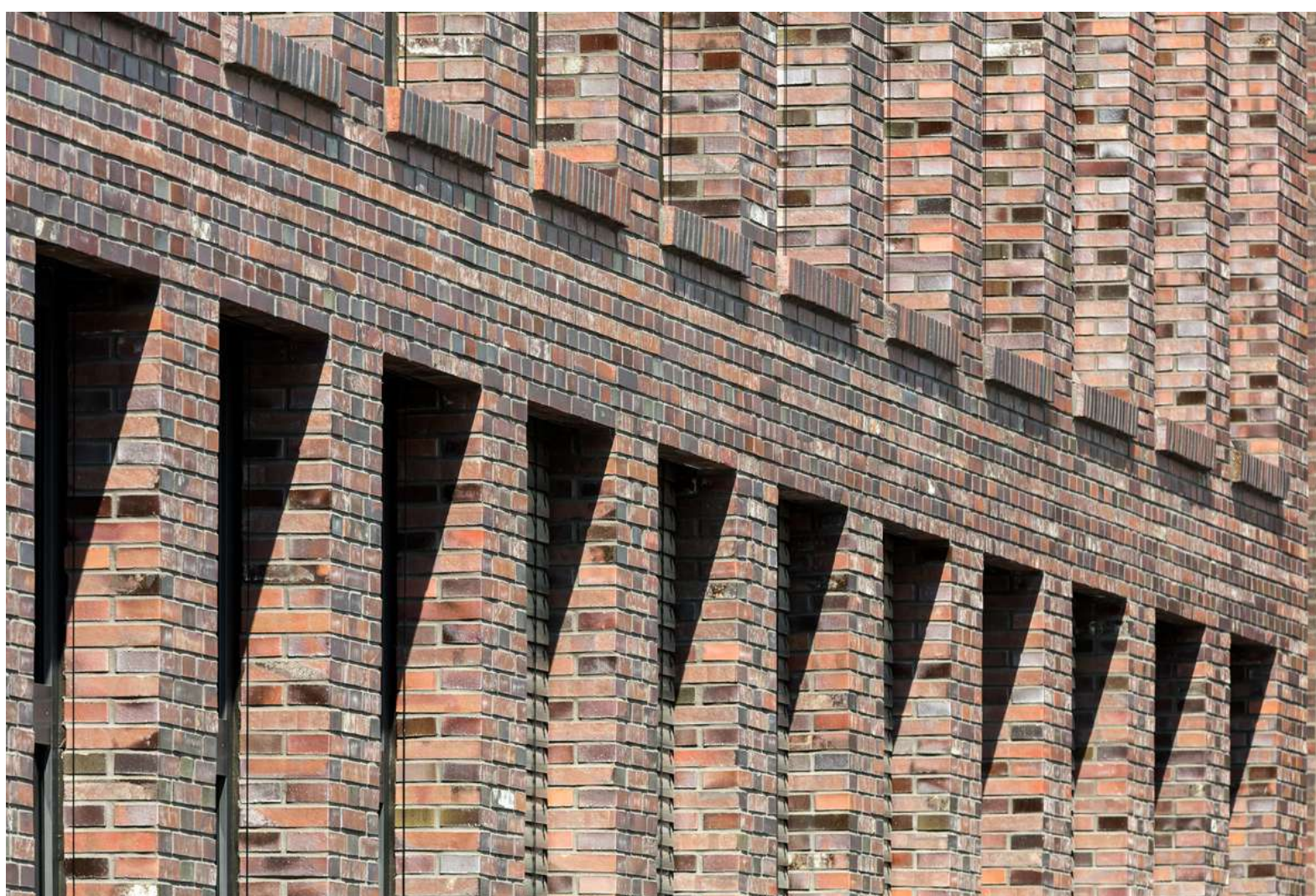








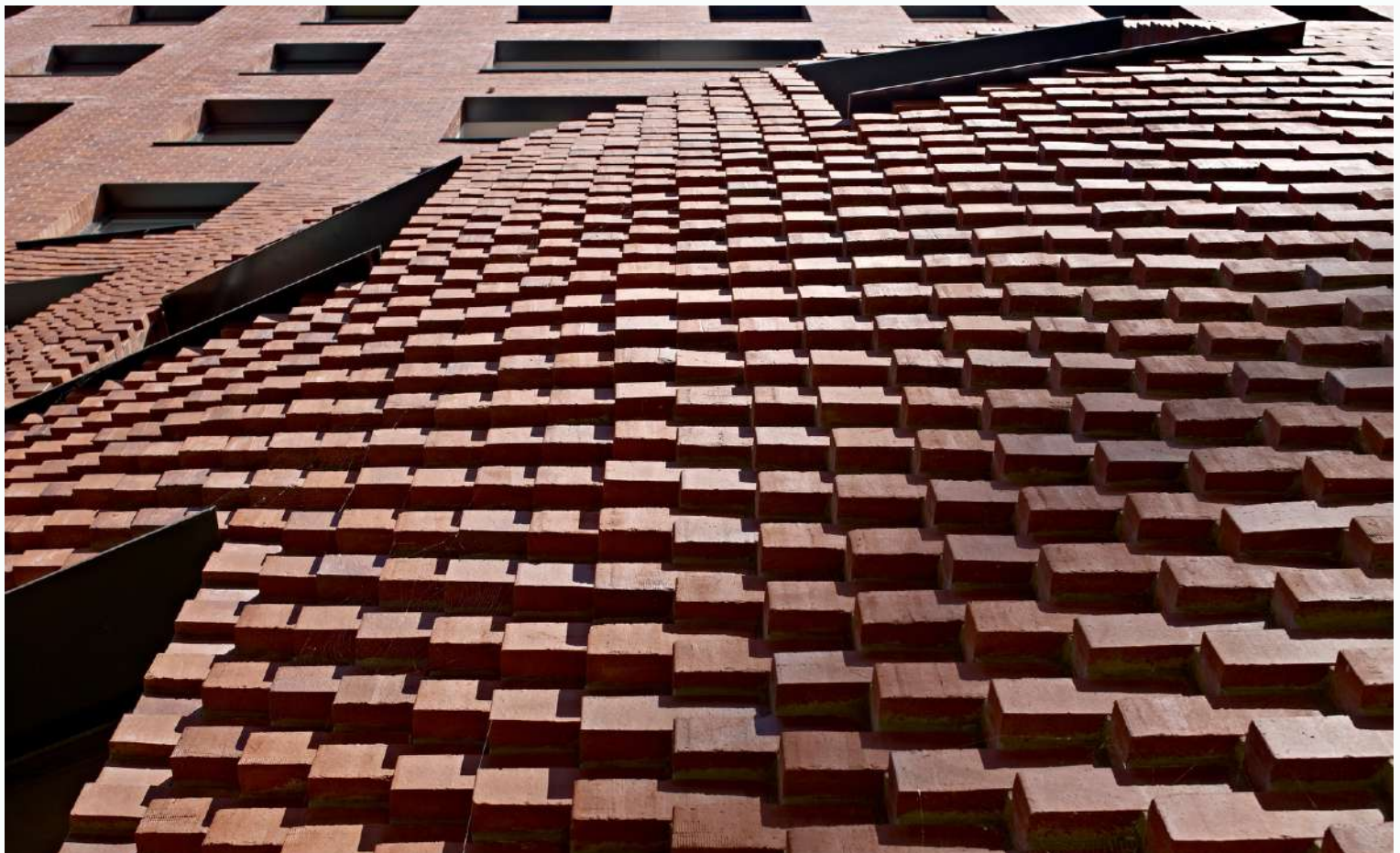






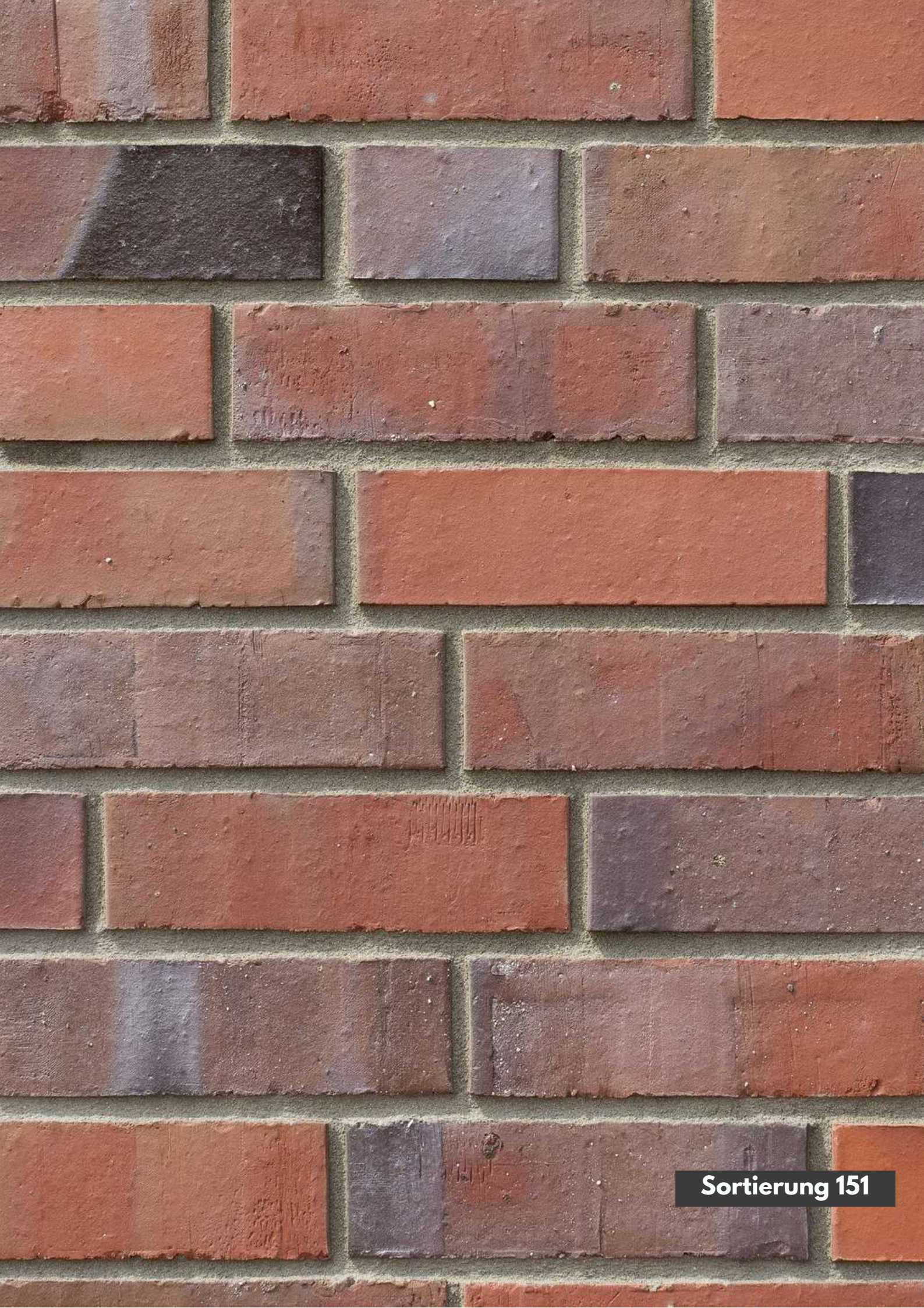




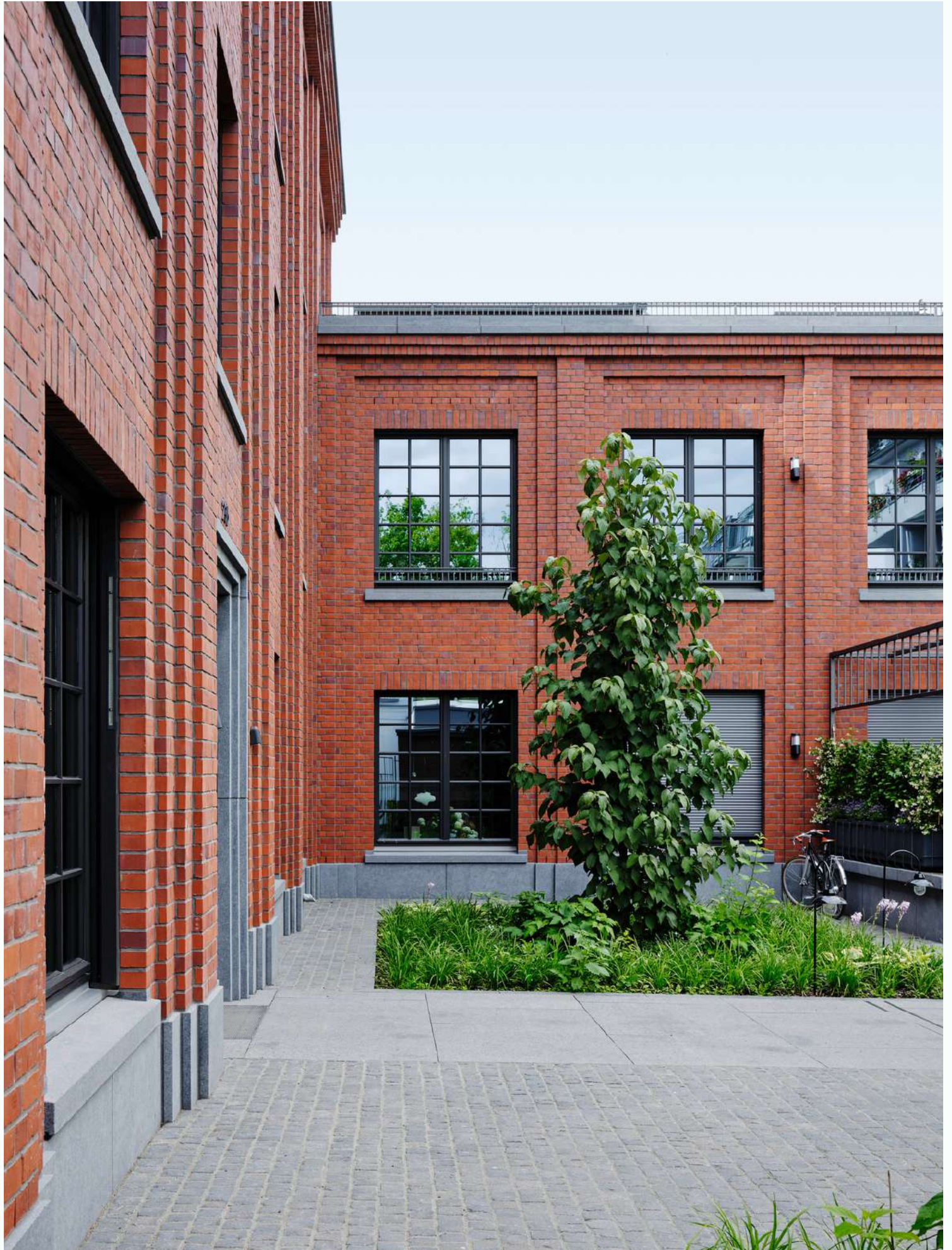








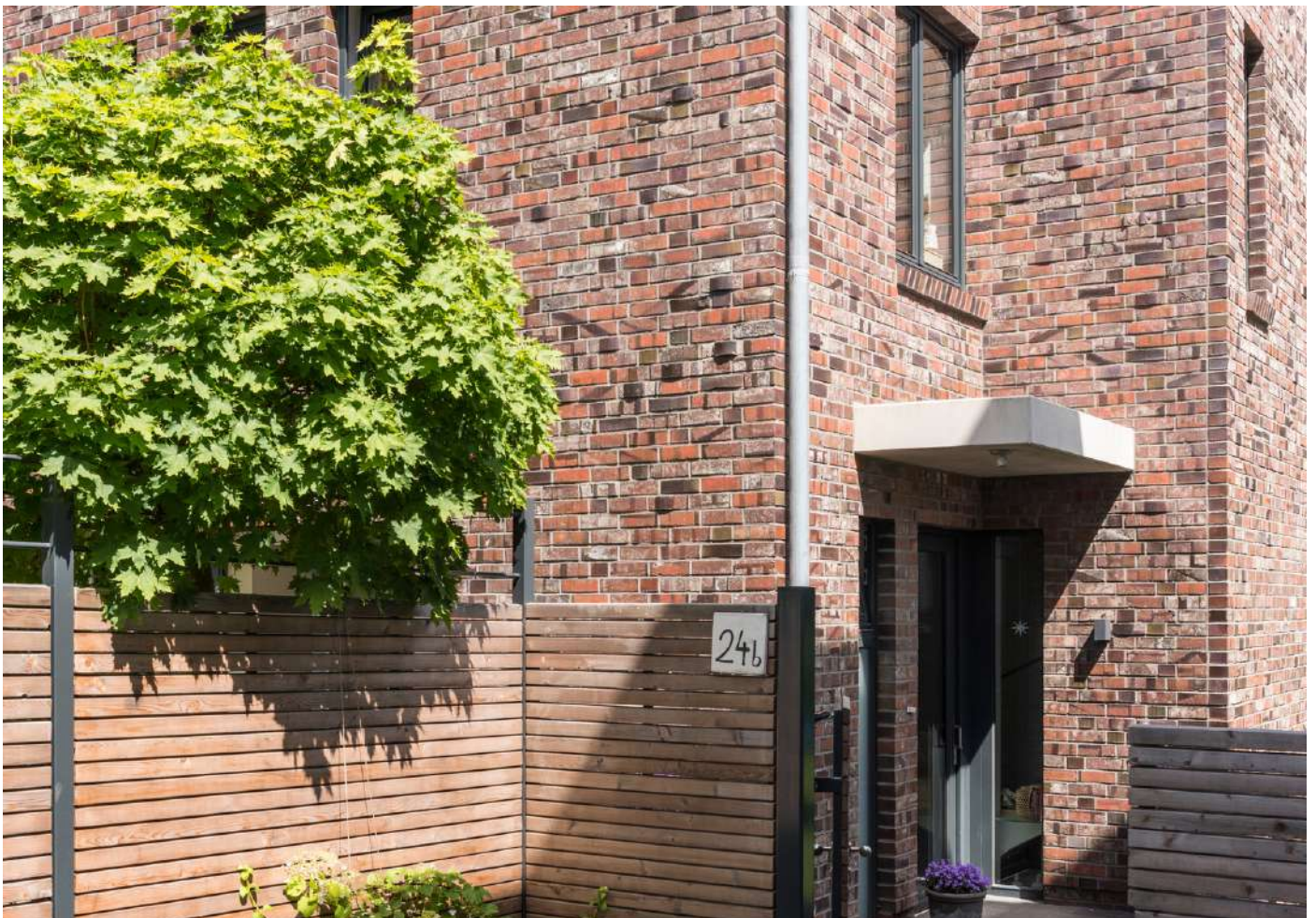
Sortierung 151

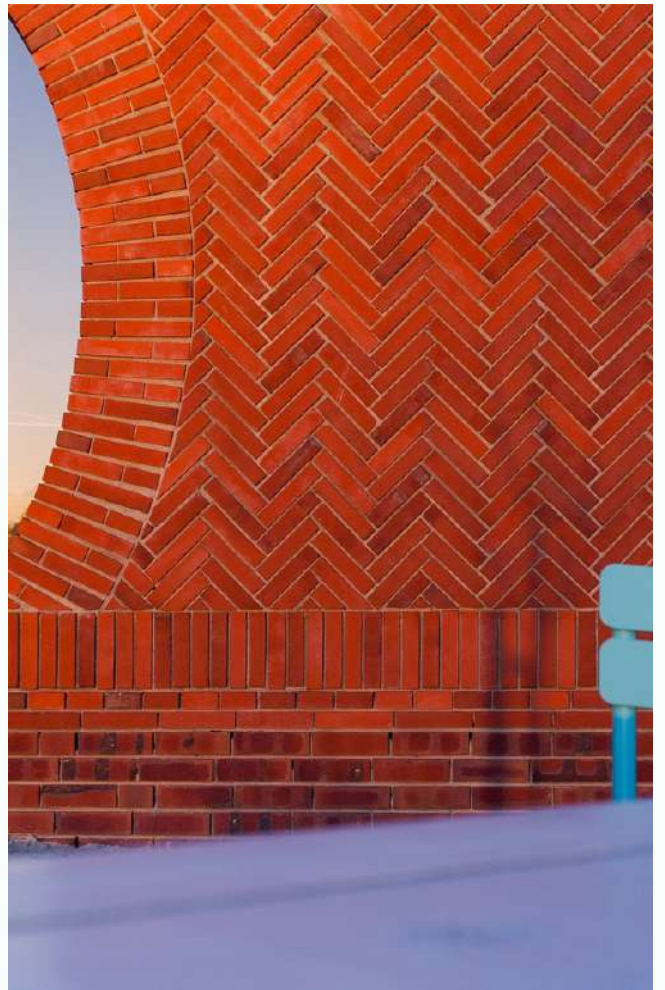




23b





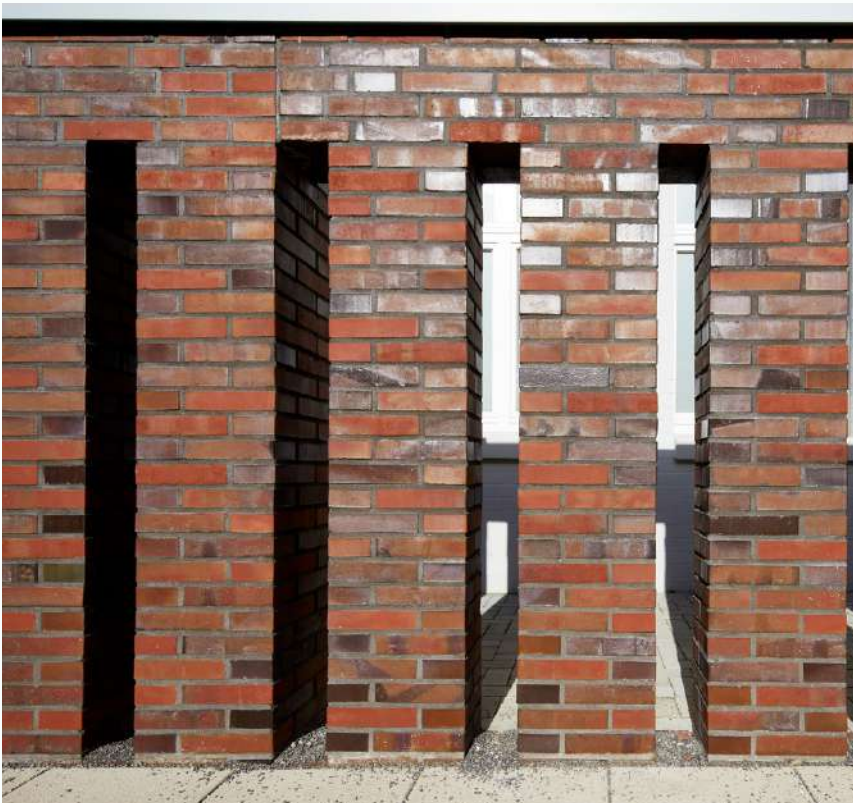




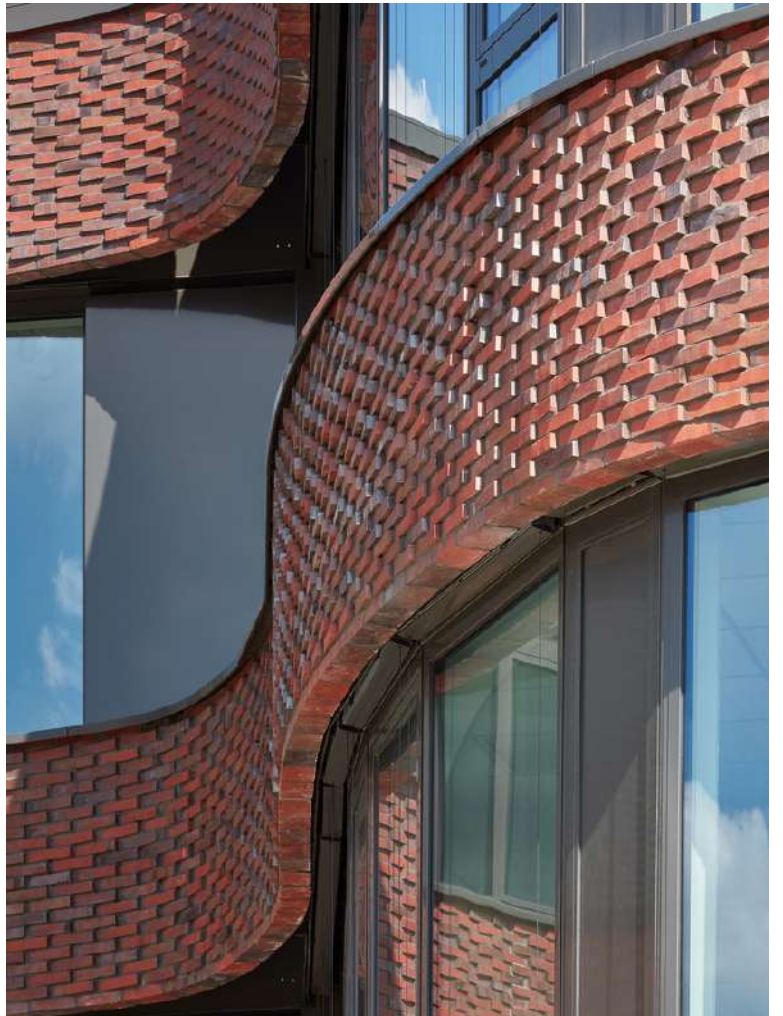


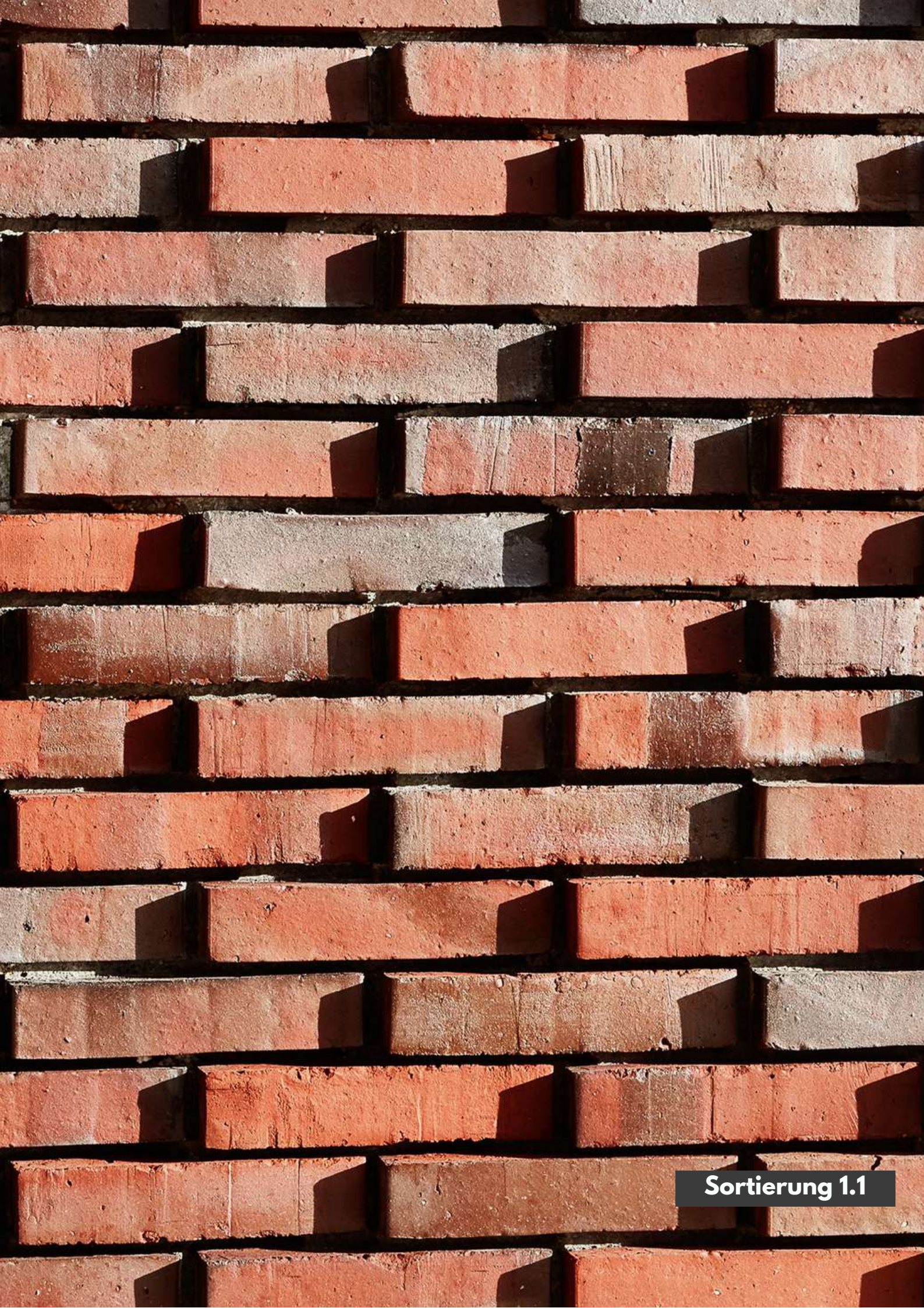


Sortierung 26









Sortierung 1.1

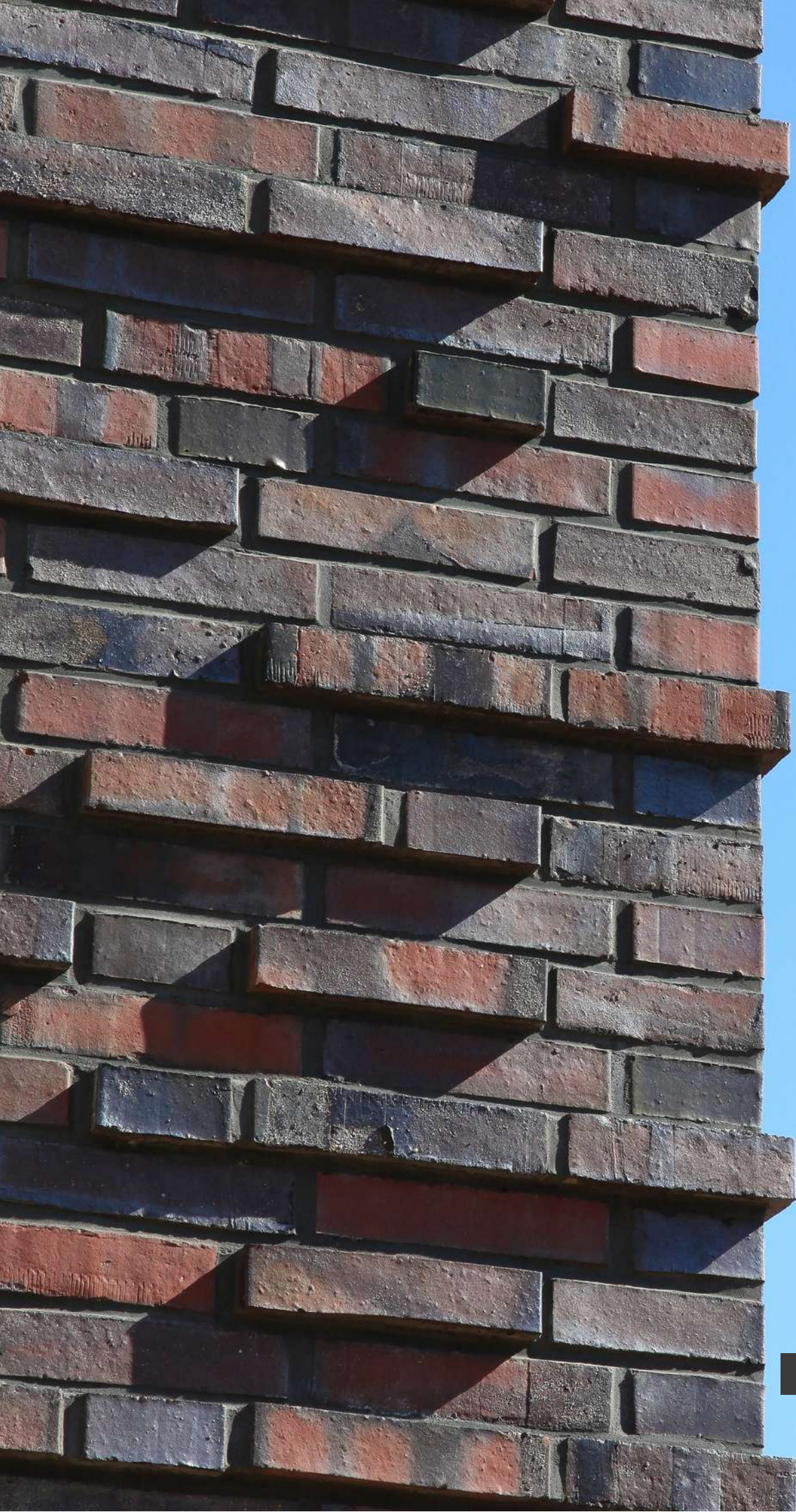




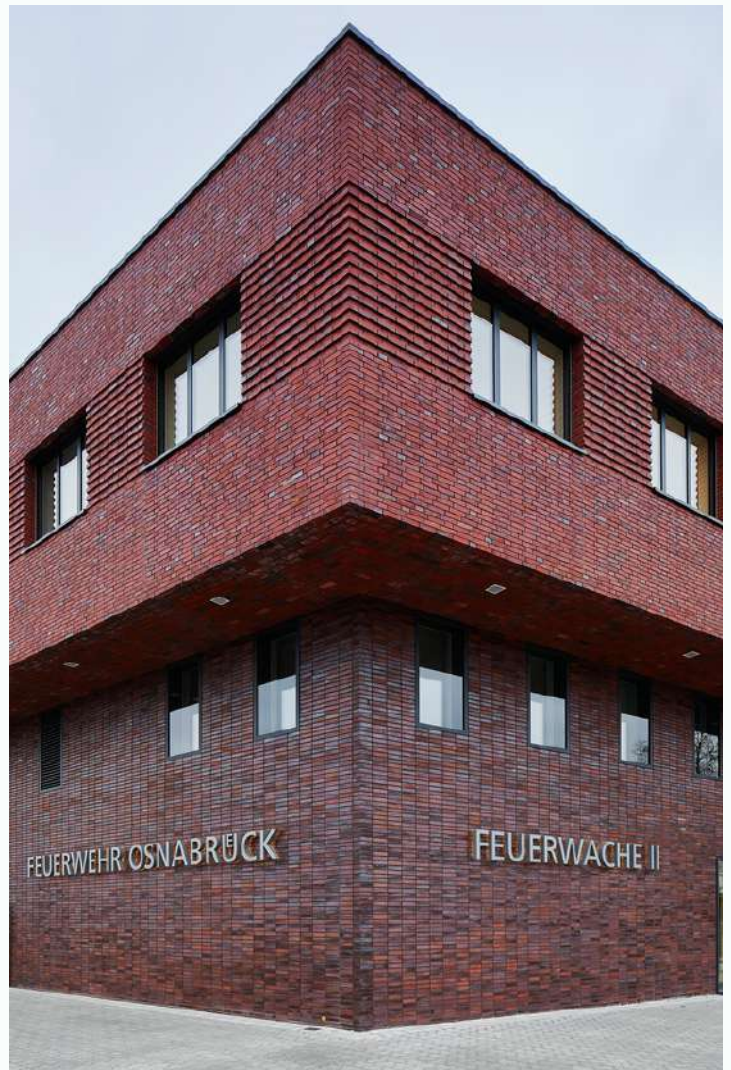






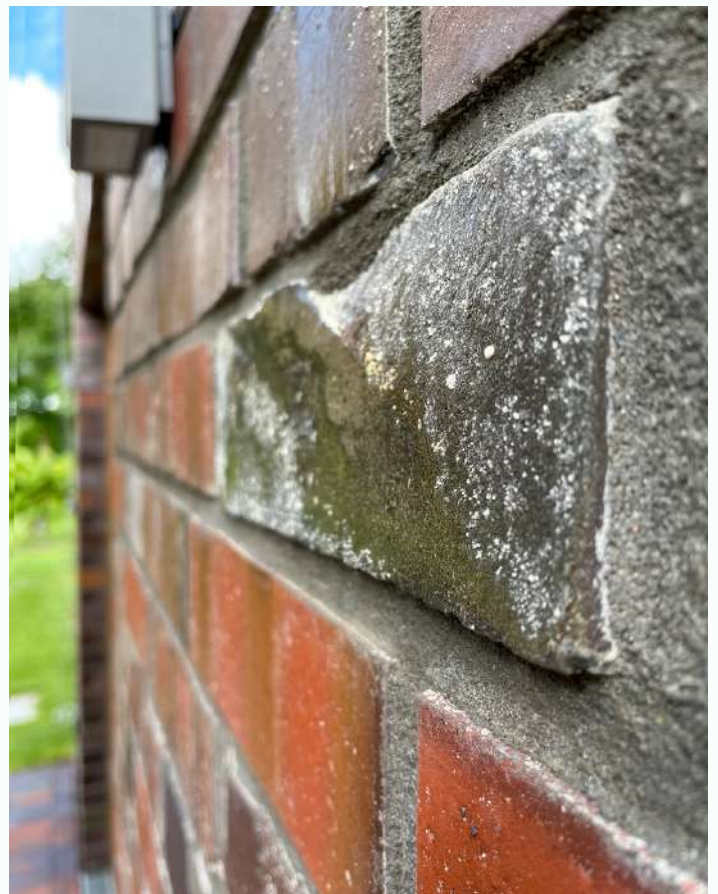
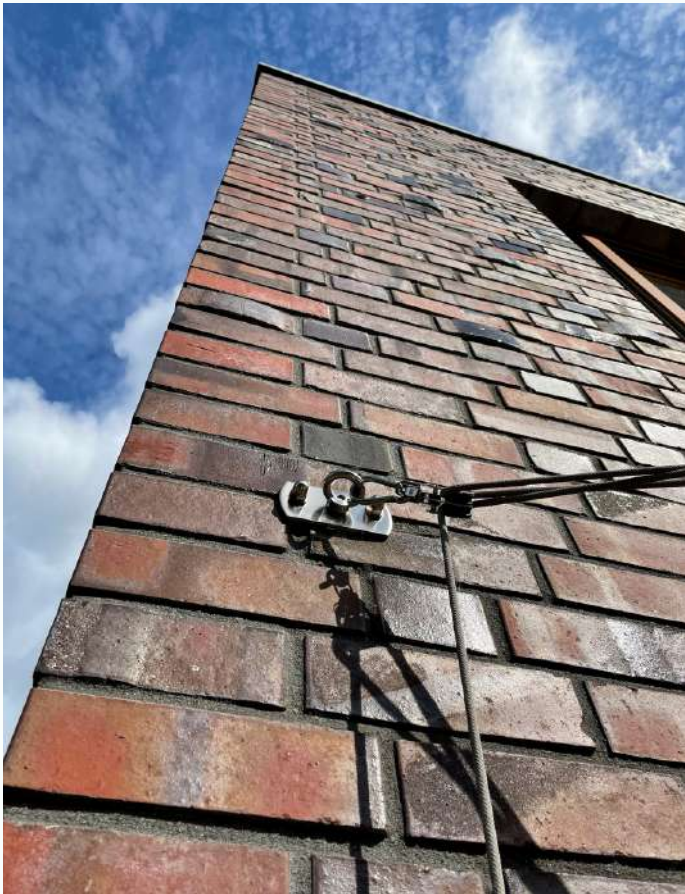


Sortierung 172





Sortierung 187





17 x 3050 Li





Wittmunder Klinker | Werk Neuschoo
Ziegeleiweg 1
DE - 26487 Neuschoo
+49 4462 9474-0
info@wittmunder-klinker.de
www.wittmunder-klinker.de